

# Forestry Plan

March 11, 2019



# Overview

- ▶ Objective
  - ▶ Terminology
  - ▶ Levels of Service
  - ▶ Scope of Responsibility
  - ▶ Manpower
  - ▶ Equipment
  - ▶ Tree Inventory
  - ▶ Tree Diversity
  - ▶ Undesirable Species
  - ▶ Right Tree, Right Place
  - ▶ Desirable Street Tree Species
  - ▶ Action Plan
- ▶ Appendix
    - A. EAB Plan
    - B. Tree Inventory Maps
    - C. Tree Inventory Summary
    - D. FAQs

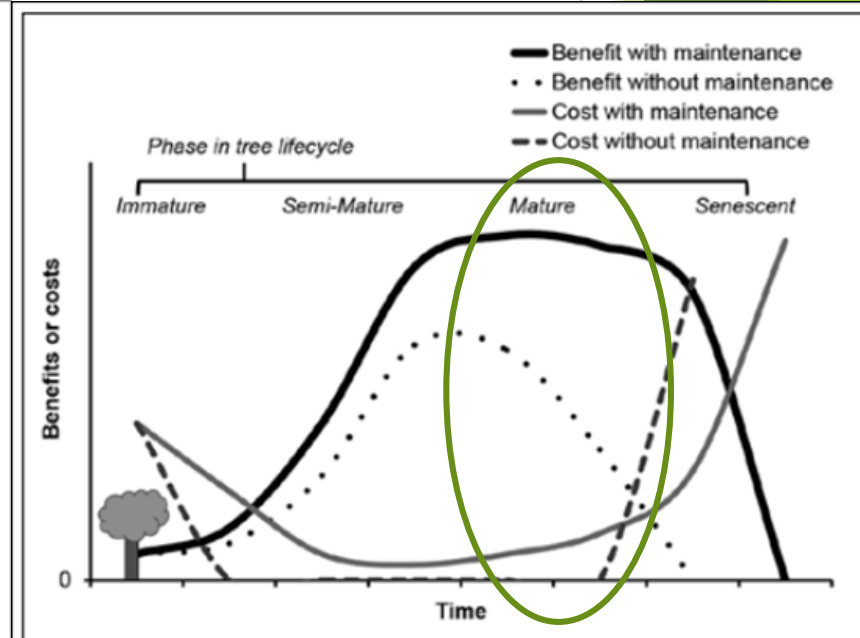
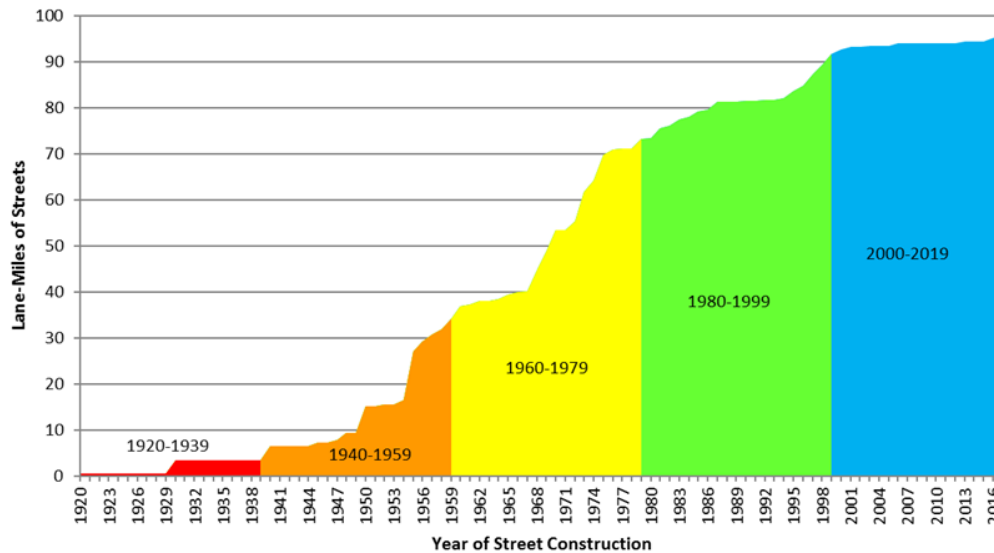
# Levels of Service

Current Proposed



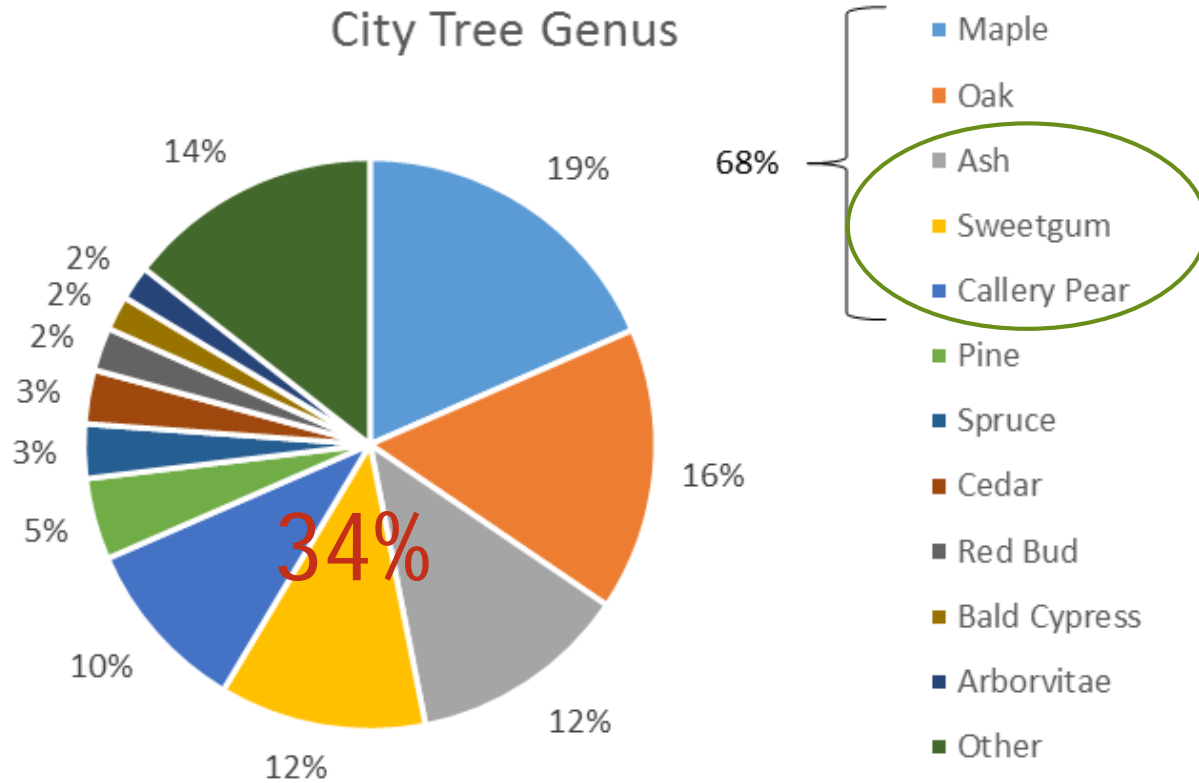
Level of Service	1	2	3	4	5
Fallen frees/limbs removed from ROW		✓	✓	✓	✓
Dead/dying frees removed from ROW			✓	✓	✓
Clearance maintained over ROW			✓	✓	✓
Undesirable species removed				✓	✓
New trees planted when old trees removed				✓	✓
City trees deadwooded					✓
City trees pruned for appearance/health					✓
All city trees inspected annually					✓
Additional trees planted to expand urban forest					✓

Age of Streets/Neighborhoods in Des Peres



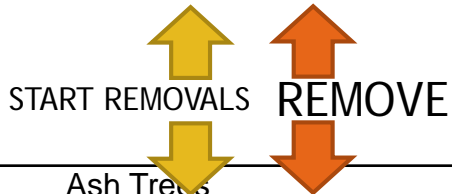
# Tree Diversity

City Tree Genus



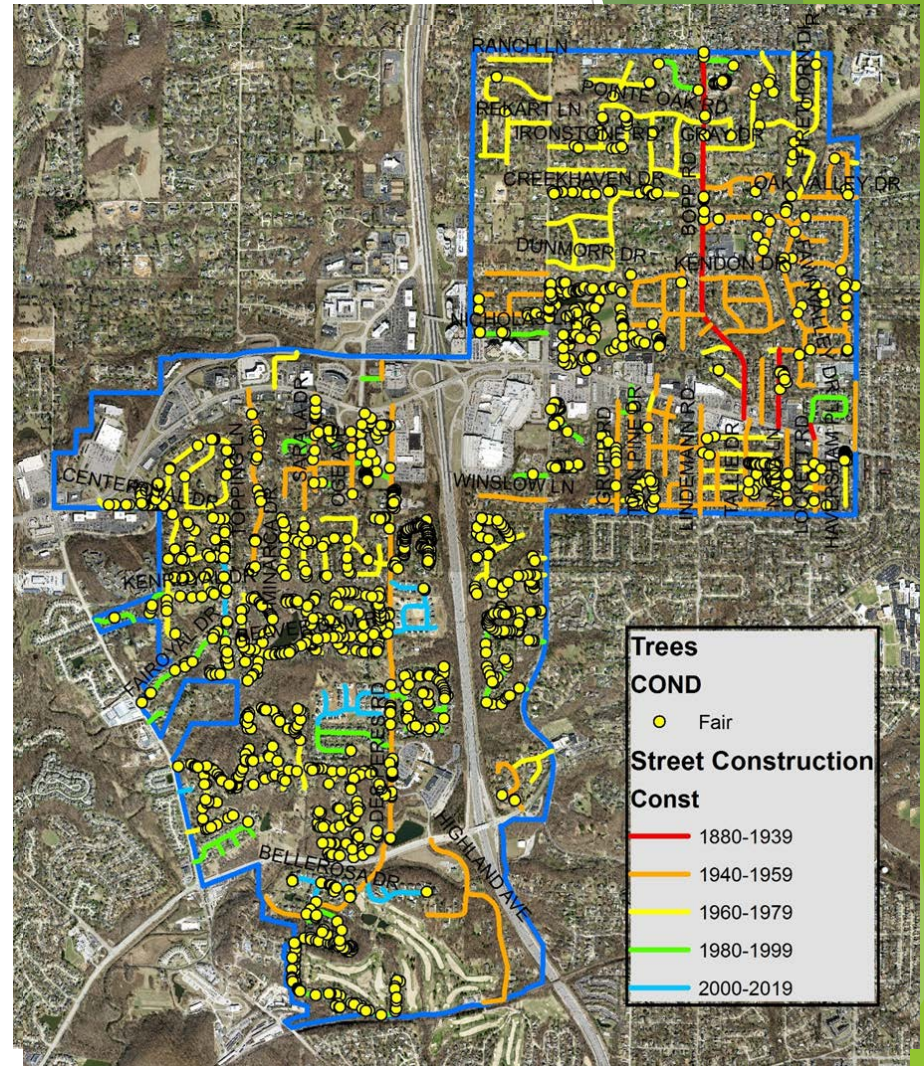
# Action Plan

All Tree Species				
	Fair	Poor	Dead	Total
Streets	1023	208	7	1238
Parks	315	32	8	355
Combined	1338	240	15	1593



Ash Trees				
	Good	Fair	Poor	Total
Streets	156	314	65	535
Parks	19	31	0	50
Combined	175	345	65	585

TREAT



# Related Funding Sources

## ▶ Public Works/Streets

- ▶ 10-555-54085 Forestry/Tree Removal
  - ▶ \$20,000: Ash Tree Removal
  - ▶ \$8,000: Trees Removed by Contractor (typical)
  - ▶ Removals by Streets staff
- ▶ 30-555-57100 Major Projects
  - ▶ \$50,000: ROW Forestry Program (Offset by Tree Fund)

## ▶ Parks & Recreation

- ▶ 20-590-53035 Office Supplies
  - ▶ \$1,850: Donation Program-Trees
  - ▶ \$10,000: Trees, Flowers, Seeds
- ▶ 20-590-54085 Forestry/Tree Removal
  - ▶ \$3,000: EAB Treatment
  - ▶ \$8,000: Tree Removal & Pruning in Parks

# Bidding

BASE BID-2019						
ITEM	DESCRIPTION	UNIT	QUANTITY	UNIT PRICE	EXTENDED PRICE	ALTERNATE: 2020 UNIT PRICE*
1	Removal of Tree (<12" DBH)	EA	50			
2	Removal of Tree (12"-36" DBH)	EA	100			
3	Removal of Tree (> 36" DBH)	EA	10			
4	Stump Removal (Dia. at Ground)	Inch	3000			
5	Tree Pruning	DBH	500			
6	EAB Treatment	DBH	500			
7	Plant 2 ½" Beech	EA	20			
8	Plant 2 ½" European Hornbeam	EA	20			
9	Plant 2 ½" Littleleaf Linden	EA	20			
10	Plant 2 ½" Blackgum	EA	20			
11	Plant 2 ½" Bur Oak or English Oak	EA	20			
12	Plant 2 ½" Japanese Zelkova	EA	20			
13	Pant 2 ½" Japanese Pagodatree	EA	20			
14	Plant 2 ½" Amur Corktree	EA	20			
<b>TOTAL BASE BID</b>						